



Residence 100—\$234,490

A smart use of space, this plan features an open kitchen, great room, and dining area. The master suite includes a large walk-in closet for ample storage and a sizeable front porch adds to this home's charm.

**1,260 Sq. Ft. • 3 Bedroom • 1 Bathroom
2-Car Tandem Garage**

- ZERO HOA Fees
- Expansive Lot - Backs Up to Open Space
- Quality Flat Panel Birch Cabinetry in Twilight Finish
- Quartz Countertops in Kitchen & Bath
- Whirlpool Stainless Steel Gas Range, Dishwasher, and Over-Range Microwave
- Double Basin Stainless Steel Kitchen Sink with Pull-down Faucet
- Shaw Foundation Plank-Style Weathered Barnboard Flooring in Select Areas

The Flats

AT ONDA VERDE

***\$2,500 CLOSING
INCENTIVE**

**ZERO DOWN WITH
MONTHLY PAYMENTS AS
LOW AS \$1,365**



2644 Ladera Drive, Fallon, NV

Open Thursday – Sunday 10 am – 5 pm
Mondays from Noon – 5 pm



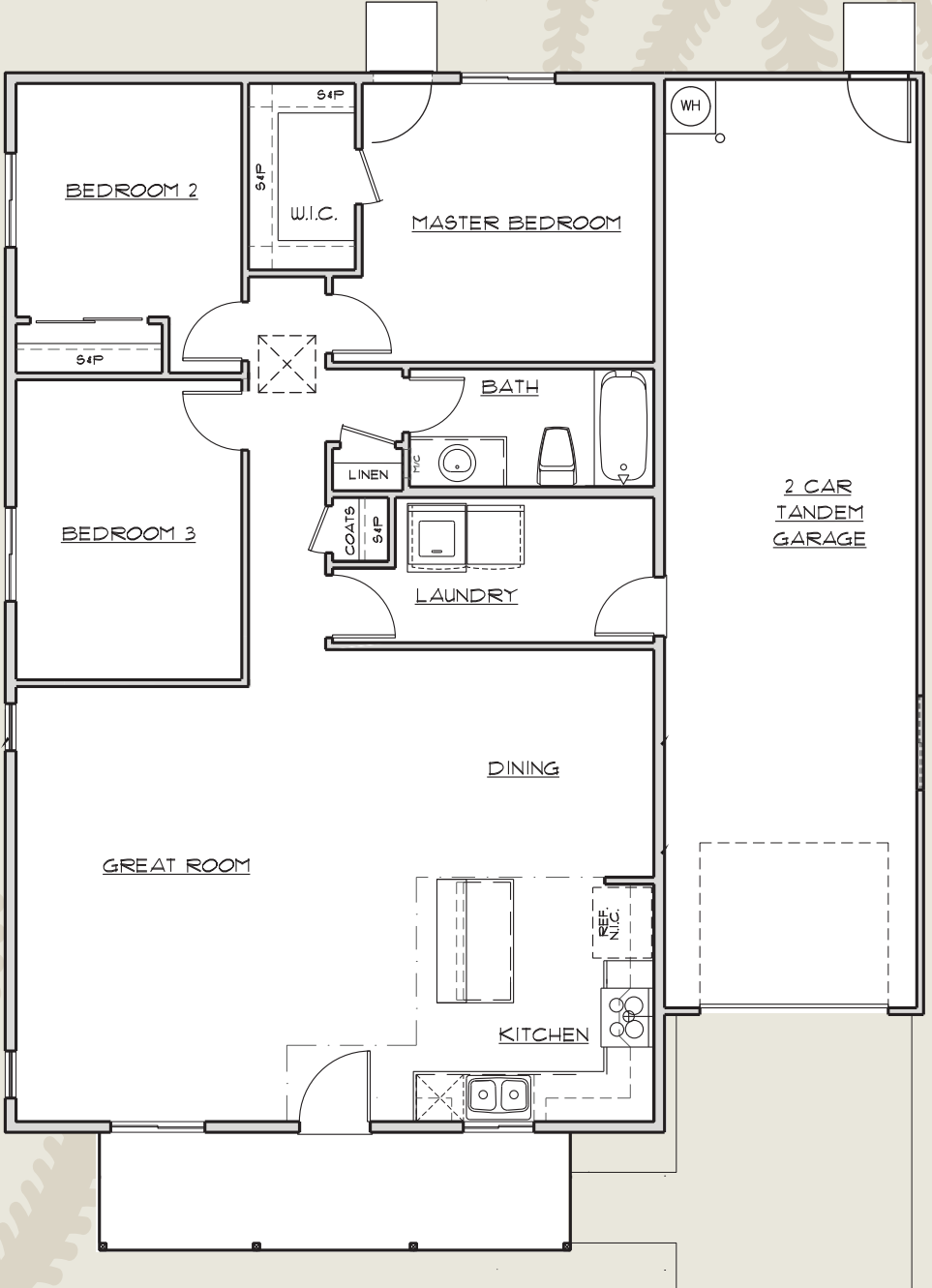
Concierge: 775.379.8100



JCommunities.com

*\$2500 closing incentive only applicable with use of preferred lender, Guild Mortgage. Guild finance packages available for qualified buyers. Monthly payments based on a purchase price of \$234,490





2644 Ladera Drive, Fallon, NV
 Open Thursday – Sunday 10 am – 5 pm
 Mondays from Noon – 5 pm



Concierge: 775.379.8100



JCommunities.com

*\$2500 closing incentive only applicable with use of preferred lender, Guild Mortgage. Guild finance packages available for qualified buyers. Monthly payments based on a purchase price of \$234,490

