

## HOMESITE #27

Plan 2 — Elevation B

1,260 Sq Ft

2 Bedroom • 2 Bathroom

Driveway Parking

# \$293,198

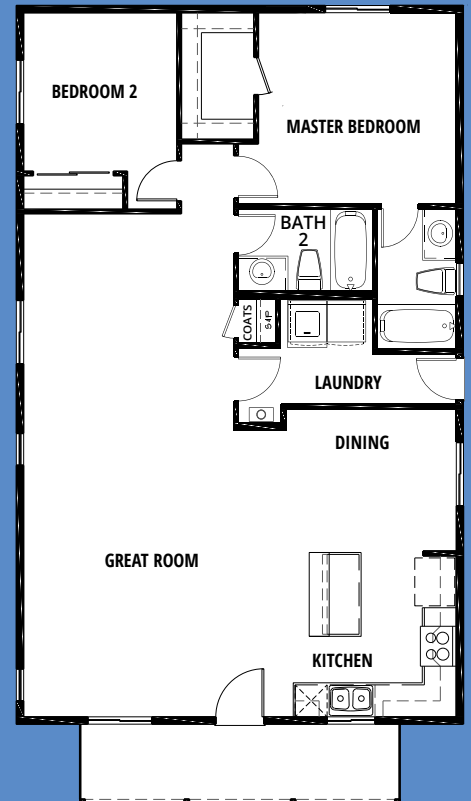
*Includes \$13,208 in Upgrades*



Homesite #27 includes the addition of a second bathroom and features upscale interior design studio selections for cabinetry, countertops, and flooring.

### INCLUDED FEATURES

- » Front Yard Landscaping with Automatic Sprinklers
- » 2nd Bathroom Option Included
- » Kitchen Granite Slab Countertops in Crema Caramel with 6" Splash
- » Gotham Gray Luxury Plank Vinyl Flooring in Entry, Kitchen, Laundry, and Bathrooms
- » Mohawk Kuhlman Crossing Carpet in Great Room, Dining Room, and Bedrooms
- » Birch Cabinetry with Flat Panel Doors



**JCOMMUNITIES.COM | CONCIERGE 775.379.8100**

305 Limber Pine Drive • Reno NV | LEMMON VALLEY

Jenuane reserves the right to make changes in price, promotions, material, and home specifications without notice or liability for such changes. Above photos are of furnished model with similar floorplan. Exterior rendering is artist's conception. Check with Sales Agent for specific details about this home. Jenuane continues to follow strict CDC guidelines for on-site tours relating to COVID-19 safety precautions. Check with Sales Agent for details. Broker cooperation welcome. 🏠

