

RIVER PARK  
RURAL NEVADA CHARM

PLAN 2

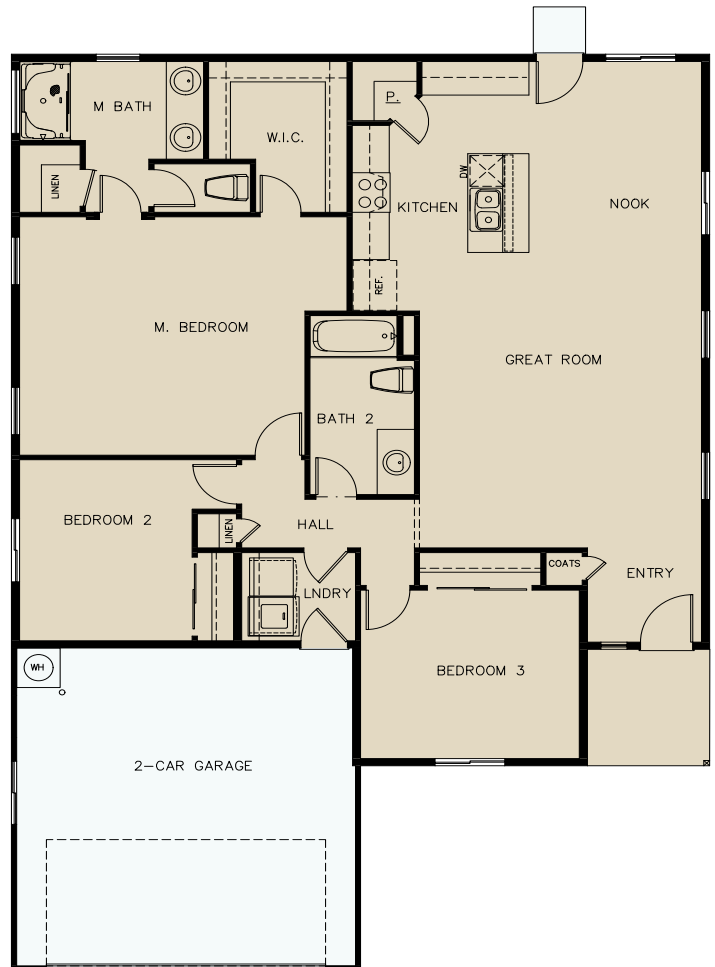
3 BR / 2 BA · 1604 SQ FT  
1 STORY · 2 CAR GARAGE



**DESCRIPTION:**

Enter Plan 2—1604 from the charming porch stoop into a spacious great room area, perfect for relaxing and entertaining. The kitchen provides efficiency between the corner walk-in pantry with ample storage and the island for additional cooking and seating space. Enjoy the adjacent nook designed for intimate meals with friends and family. The master suite features an expansive walk-in closet and additional linen closet in the master bathroom.

*Each home includes interior selection choices for granite countertops, cabinetry, carpet, and tile flooring in designated areas. Additional upgrades and options available.*



# ALTERNATE ELEVATIONS



ELEVATION A



ELEVATION B



ELEVATION C

# FLOORPLAN OPTIONS

