



RIVERPARK

RURAL NEVADA CHARM

FEATURED HOME



HOMESITE #16-25 • PLAN 5 • EARLY NOVEMBER MOVE-IN READY

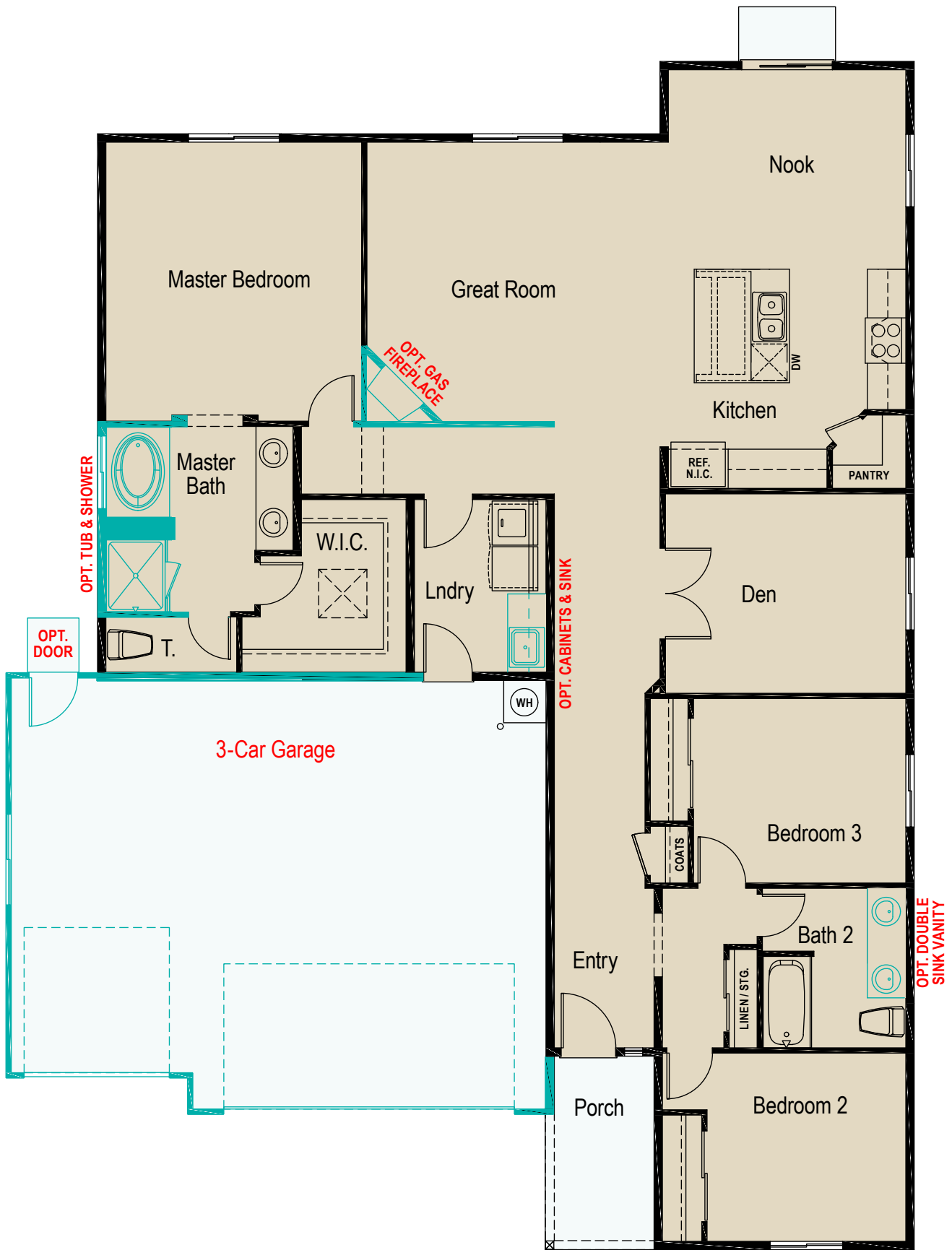
3 BR + Den / 2 BA / 1 Story / 3-Car Garage • 1,985 SF • **\$489,229** • Elevation A

Homesite #16-25 features an elegant entry and a private wing 'feel' for the second and third bedrooms. The gourmet kitchen includes Whirlpool® stainless steel appliances, quality birch cabinetry in twilight, and a walk-in pantry. A corner fireplace enhances the ambiance of the great room. Enjoy a tucked away master suite with walk-in closet and upscale bathroom with soaking tub. The addition of an extra garage bay ensures storage needs are met.

INCLUDED FEATURES & UPGRADES

- Additional 1-Car Garage
- Great Room Fireplace
- Master Bath Tub & Walk-In Shower
- Double Vanity Sink in Second Bathroom
- Kitchen & Bath Quality Birch Cabinets in *Twilight*
- 36" Upper Kitchen Cabinets with Crown Moulding
- *Stainless Steel Whirlpool* Kitchen Appliances Includes 4-Burner Gas Range, Microwave Oven, & Dishwasher
- Master Bedroom 52" *Fanimation Aire Delux* Ceiling Fan in *Brushed Nickel*

FLOOR PLAN



Jenuane reserves the right to make changes in price, promotions, material, and home specifications without notice or liability for such changes. Home currently under construction and estimated delivery date subject to change. Renderings and floorplan are the artist's conception. Check with the Sales Agent for details. Broker cooperation is welcome.

