



AT VALLEY KNOLLS

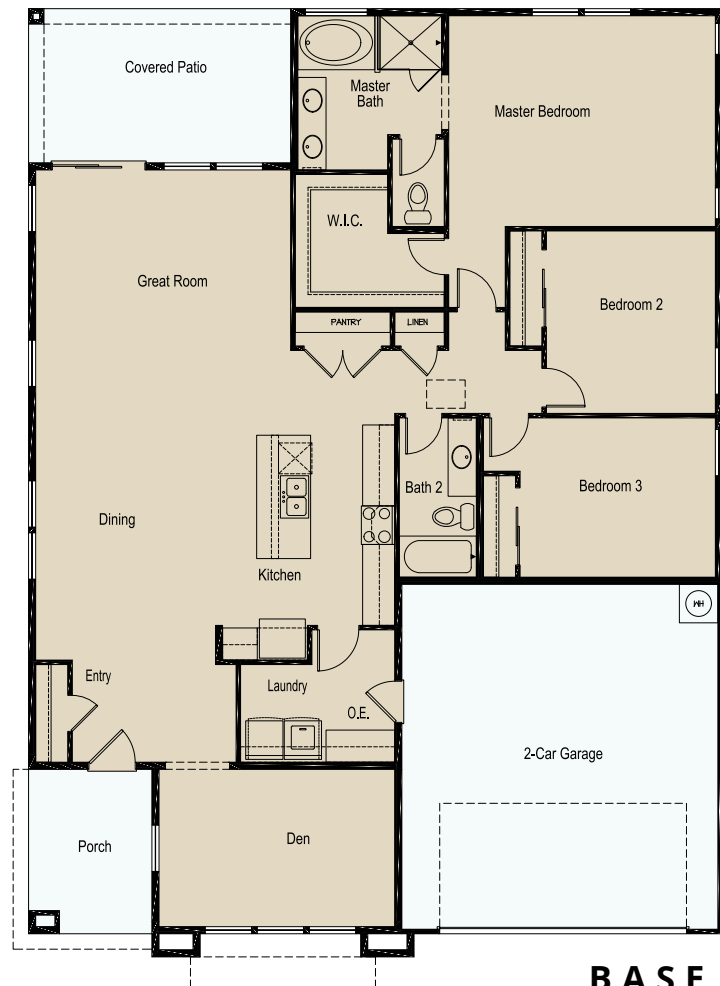
### PLAN 3

3 BR + DEN / 2 BA · 1973 SQ  
1 STORY · 2 CAR GARAGE



### HIGHLIGHTS:

- Spacious Dining & Great Room
- Open Gourmet Kitchen
- Tucked Away Corner Den
- Expanded Laundry Room
- Large Master Suite Walk-In Closet



BASE PLAN

# ELEVATIONS



URBAN



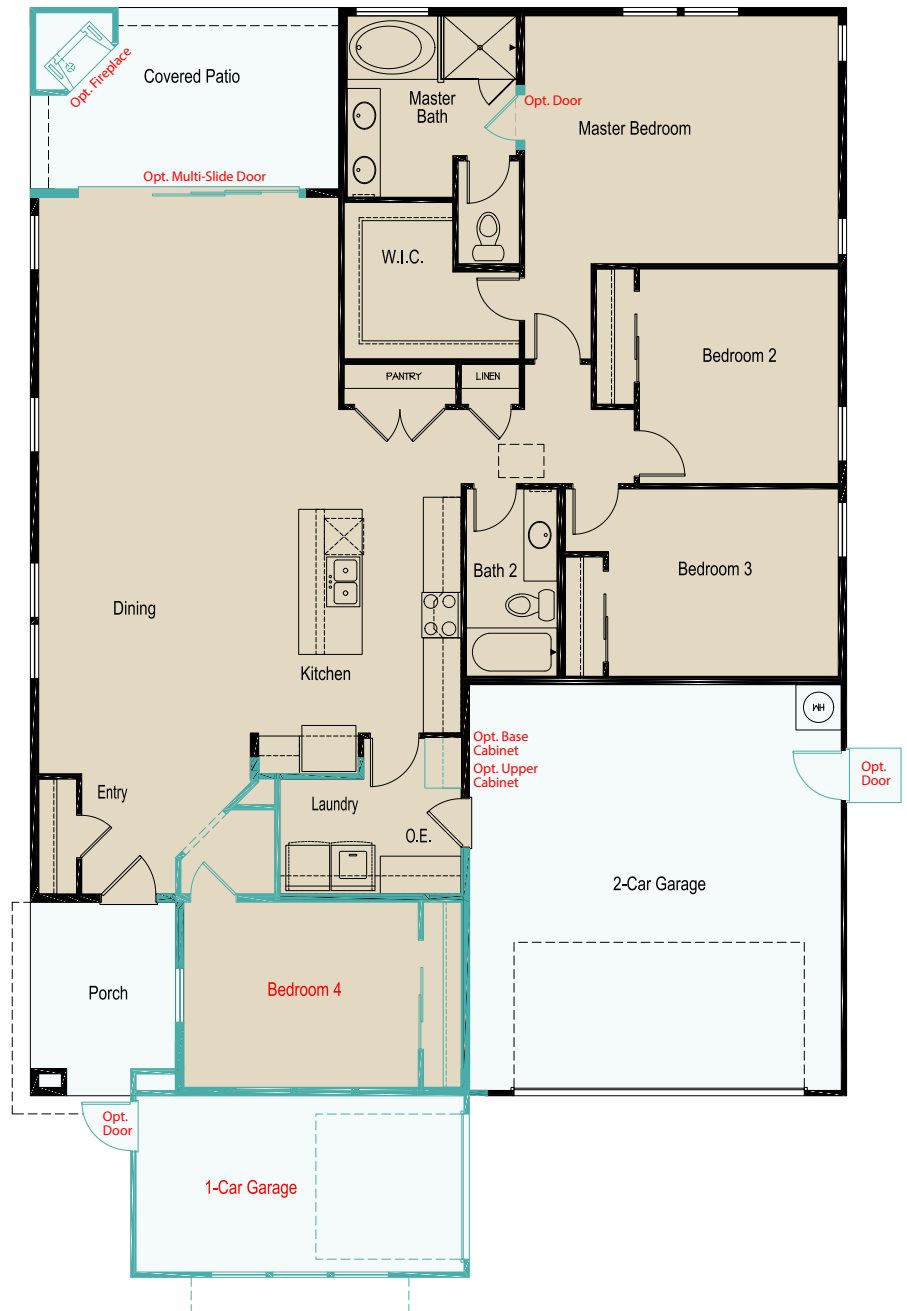
MODERN



PRAIRIE

## FLOORPLAN OPTIONS:

- 4<sup>th</sup> Bedroom Addition
- Additional Single-Car Garage
- Great Room Multi-Slider
- Outdoor Fireplace
- Additional Doors for Access & Privacy
- Laundry Room Cabinetry



Jenuane reserves the right to make changes in price, promotions, material, and home specifications without notice or liability for such changes. Square footage and floorplan representations are approximate. Alternate elevations have minor variations in floorplans and square footage. Renderings are artist's concept. Floorplan may not show all available options. Broker cooperation welcome. Contact the sales agent for details.

