



# THE Ridge

AT VALLEY KNOLLS

## PLAN 4

4 BR / 2.5 BA · 2125 SQ FT  
1 STORY · 3 CAR TANDEM



### HIGHLIGHTS:

- Largest Single-Story Plan
- Elegant Entry
- Oversized Master Suite Walk-In Closet
- Walk-in Closets in 3<sup>rd</sup> & 4<sup>th</sup> Bedrooms
- Walk-In Kitchen Pantry



**BASE PLAN**

# ELEVATIONS



URBAN



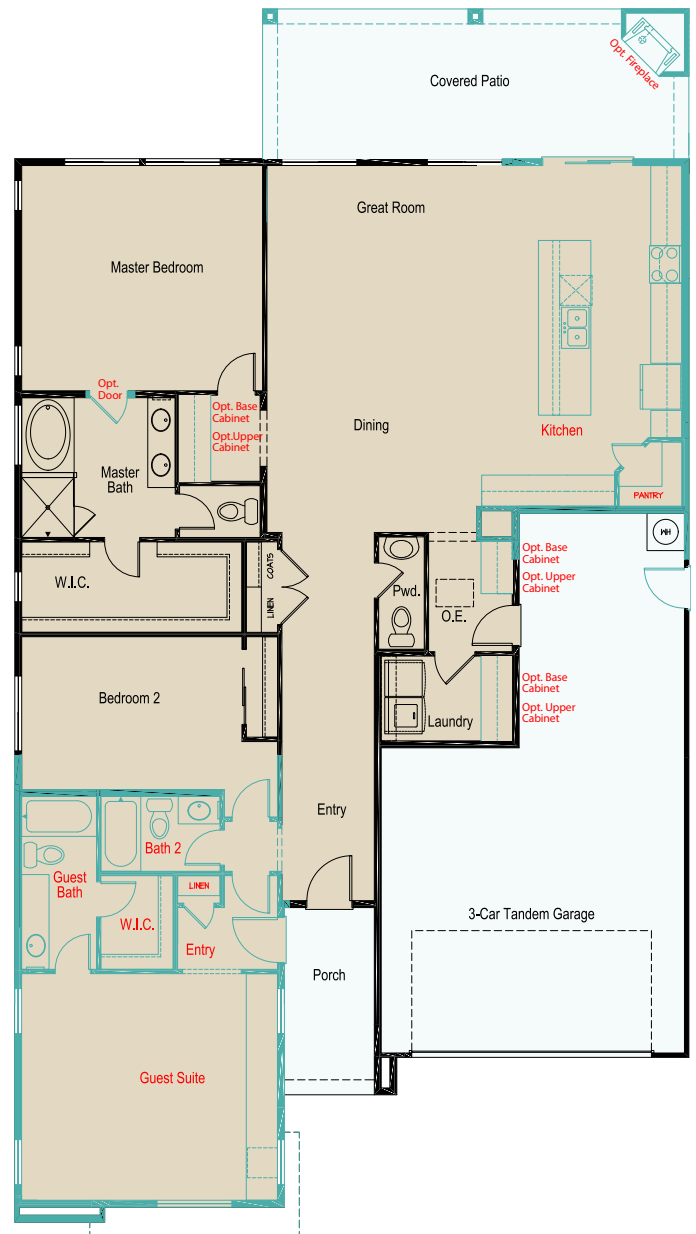
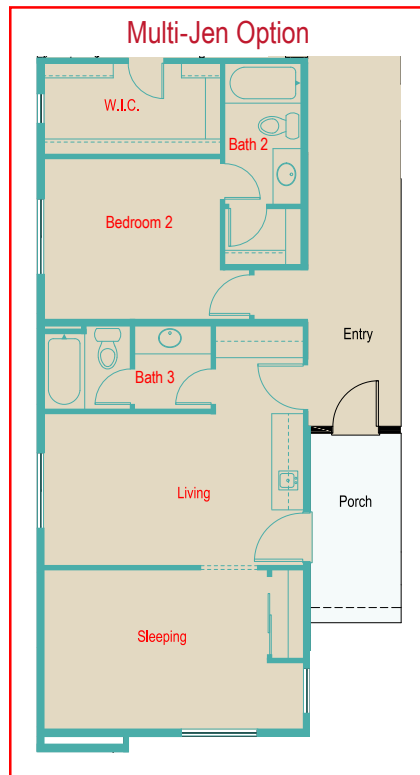
MODERN



PRAIRIE

## FLOORPLAN OPTIONS:

- Multi-Generational Wing with Private Entry, Separate Bedroom, Living Room, & Full Bath
- Guest Suite with Full Bath & Walk-in Closet
- Expanded Kitchen with Multi-Slider
- Expanded Back Covered Patio
- Outdoor Fireplace
- Additional Doors
- Laundry Room Cabinetry
- Master Suite Entry Cabinetry



**MULTI-JEN**  
Connecting Generations



Jenuane reserves the right to make changes in price, promotions, material, and home specifications without notice or liability for such changes. Square footage and floorplan representations are approximate. Alternate elevations have minor variations in floorplans and square footage. Renderings are artist's concept. Floorplan may not show all available options. Broker cooperation welcome. Contact the sales agent for details.

